



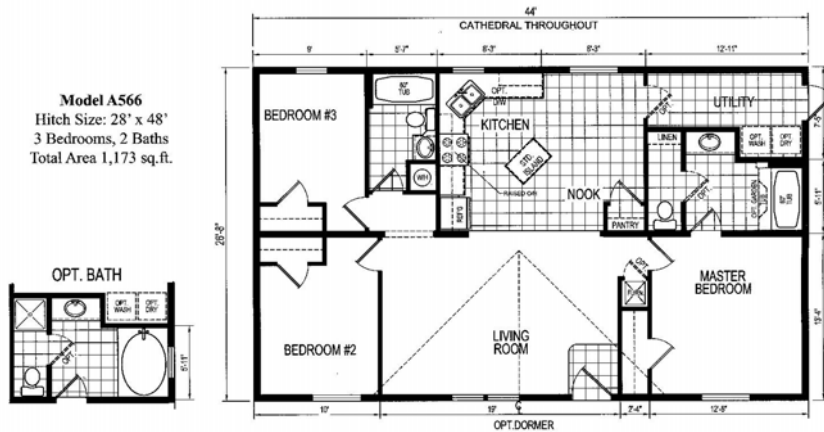
**Long's Homes Inc.**

"Friends Helping Friends, Since 1961"

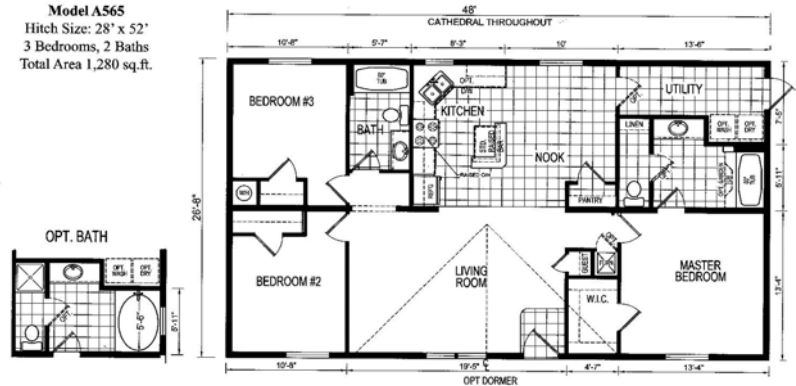
“Elite Series” Sectionals



Home shown has optional exterior features



**Model A565**  
Hitch Size: 28' x 52'  
3 Bedrooms, 2 Baths  
Total Area 1,280 sq.ft.



**Long's Homes Inc.**

9502 Route 22  
Blairsville, PA 15717

Phone: 724-459-5044  
Fax: 724-459-5099

E-mail: info@longshomes.com

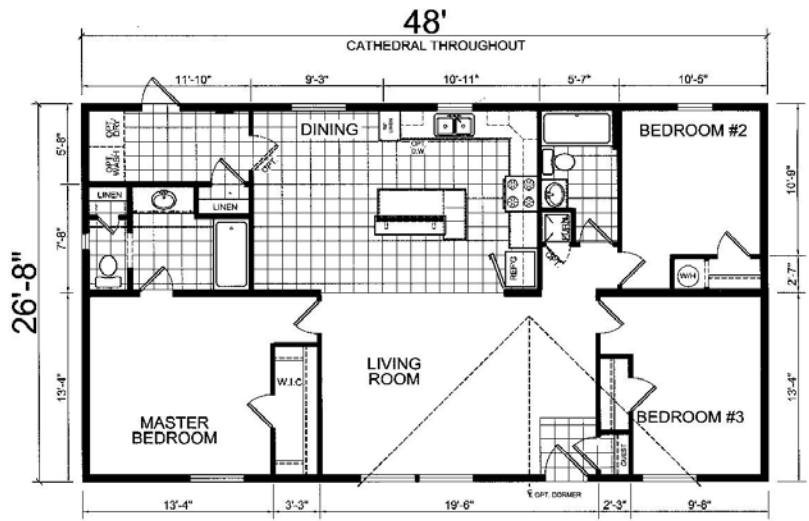
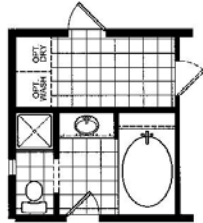
All sizes are approximate & all plans are subject to change without notice!



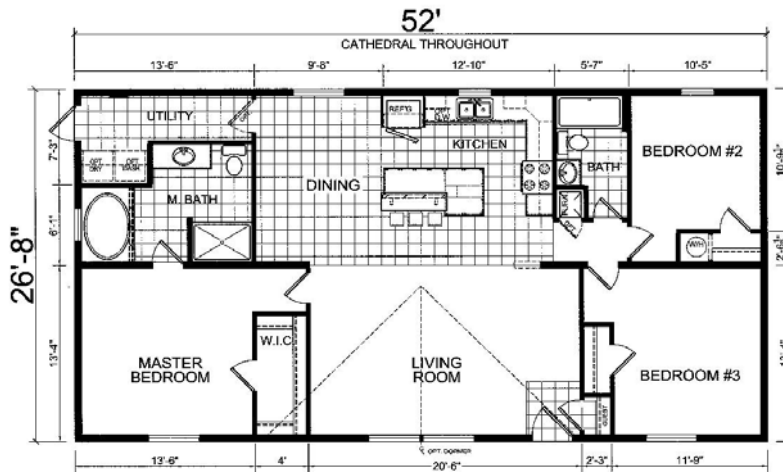
# Long's Homes Inc.

"Friends Helping Friends, Since 1961"

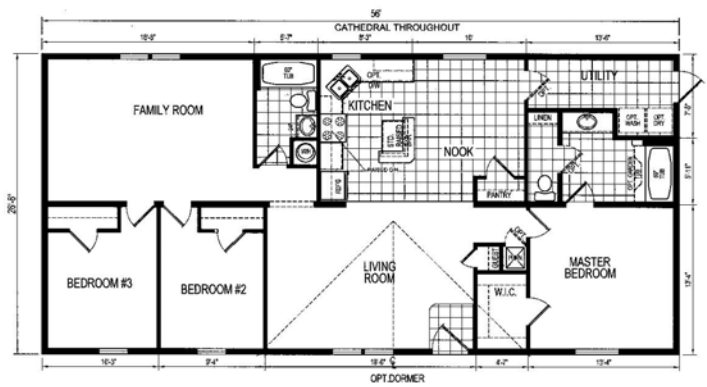
**Model A675**  
Hitch Size: 28' x 52'  
3 Bedrooms, 2 Baths  
Total Area 1,280 sq.ft.



**Model A676**  
Hitch Size: 28' x 56'  
3 Bedrooms, 2 Baths  
Total Area 1,386 sq.ft.



**Model A567**  
Hitch Size: 28' x 60'  
3 Bedrooms, 2 Baths  
Total Area 1,493 sq.ft.



## Long's Homes Inc.

9502 Route 22  
Blairsville, PA 15717

Phone: 724-459-5044  
Fax: 724-459-5099  
E-mail: info@longshomes.com

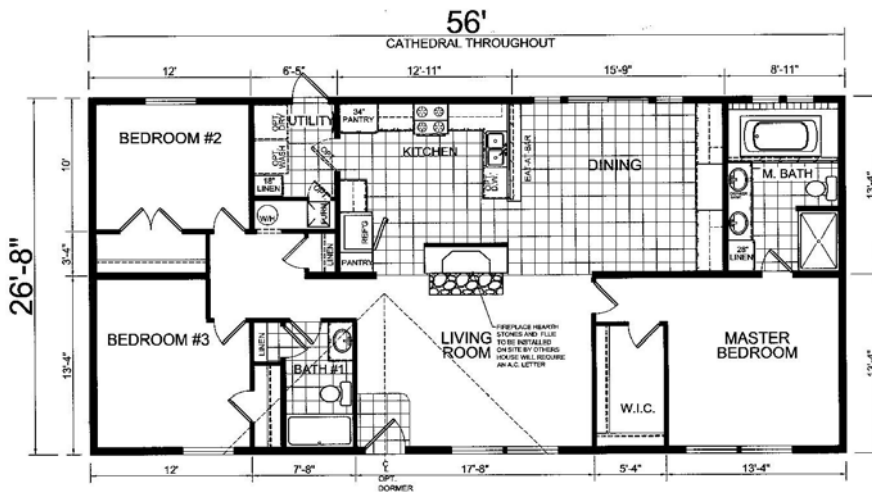
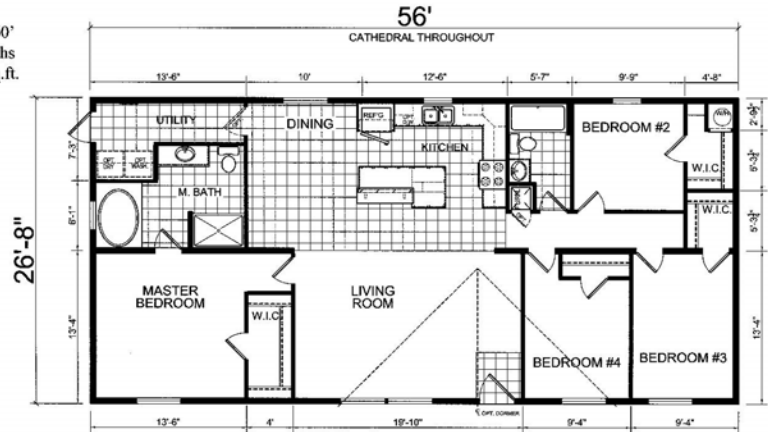
All sizes are approximate & all plans are subject to change without notice!



# Long's Homes Inc.

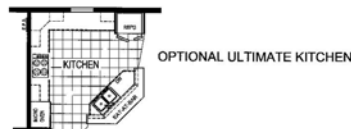
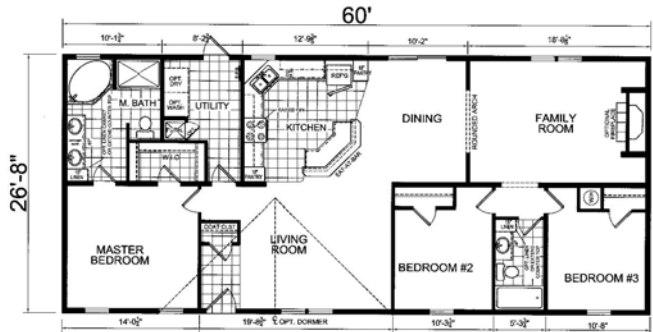
"Friends Helping Friends, Since 1961"

**Model A677**  
 Hitch Size: 28' x 60'  
 4 Bedrooms, 2 Baths  
 Total Area 1,493 sq.ft.



**Model A644**  
 Hitch Size: 28' x 60'  
 3 Bedrooms, 2 Baths  
 Total Area 1,493 sq.ft.

**Model A586**  
 Hitch Size: 28' x 64'  
 3 Bedrooms, 2 Baths  
 Total Area 1,600 sq.ft.



## Long's Homes Inc.

9502 Route 22  
 Blairsville, PA 15717

Phone: 724-459-5044  
 Fax: 724-459-5099

E-mail: info@longshomes.com

All sizes are approximate & all plans are subject to change without notice!